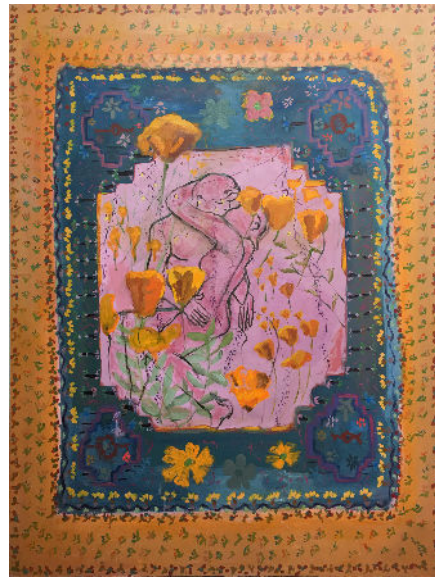


GEARY



'The Kiss' Overgrown with Poppies, Jennifer Rochlin, 2019, Oil on canvas, 72 x 53 in.

SUPER BLOOM

JENNIFER ROCHLIN

APRIL 25 - MAY 31

**OPENING RECEPTION
APRIL 25, 6-8PM**

Geary is pleased to present Jennifer Rochlin's *Super Bloom*, a presentation of new ceramic vessels accompanied by a single painting.

Rochlin, a trained painter working in hand-built ceramics, strings together a band of imagery on her coiled pots to reveal sensual, vivid paintings in the round. Among her cast of characters are P22, the mountain lion immortalized for living alongside Los Angeles's Hollywood side, young tinder hook ups, Bethany Hamilton, a famed child surfer who lost her arm to a shark, and Bruce Lee. These ultra-specific references, intermingled with supplemental imagery such as native Californian flora, depict a striking and intimate narrative of Rochlin's home, life, role models, and heroes. The title of the exhibition, *Super Bloom*, adds further context to this story, referring to Southern California's current abundance of blossoming wildflowers. In the painting, the borders of a rug contain Rodin's "The Kiss" as it is being populated by overgrown poppies and native plants suggesting the passing of time and the memory of desire.

Jennifer Rochlin was born in Baltimore, Maryland and lives in Los Angeles, California. She received an MFA from the School of the Art Institute of Chicago, participated in an exchange at the Universität der Künste, Berlin, and received a BA from the University of Colorado, Boulder. She has had solo exhibitions at Lefebvre & Fils, Paris France (2018); The Pit, Los Angeles, CA (2018), and Black Dragon Society, Los Angeles, CA (2007) Rochlin's work has been featured in thematic exhibitions and two person shows such as Paintings and Pots, The Green Gallery, Milwaukee, WI (2018) Jennifer Rochlin/Gene Moreno, Institute of Visual Arts (INOVA), University of Milwaukee, (2007), Home Show, Revisited, Santa Barbara Contemporary Arts Forum, Santa Barbara, CA (2011); Open Daybook, Los Angeles Contemporary Exhibitions, Los Angeles, CA (2011); MKE-LAX, Milwaukee Institute of Art and Design, Milwaukee, WI (2012); Venice Beach Biennial, in conjunction with Made in LA, Hammer Museum, Los Angeles and Venice, CA (2012); and Sculptures, 356 Mission, Los Angeles, CA (2013). Rochlin is the recipient of the Individual Artist Grant from the Belle Foundation (2015) and the Durfee Foundation ARC grant (2007).

185 Varick Street
New York, NY 10014
+1 212 242 0185
info@geary.nyc
geary.nyc

Geary was founded in the Lower East Side in 2013 by Jack Geary and Dolly Bross Geary, and then moved to its current location on Varick Street in West Soho. The gallery represents emerging and mid-career artists working in a variety of media, with an emphasis on those from New York City and the Midwest. Geary presents solo, two-person, and group exhibitions, and seeks to raise artist profiles and exposure through placement in museum collections and exhibitions, and through presentations at art fairs.